

CLASSIC COLLECTION



HANDMADE IN BRITAIN

LLOYD LOOMTM

MANUFACTURING LTD.



HANDMADE IN BRITAIN



HANDMADE IN BRITAIN

LLOYD LOOMTM

MANUFACTURING LTD.

CLASSIC COLLECTION

Our classic collection is handmade at our factory in Lincolnshire using traditional crafts and techniques. Our proud aim is to make the finest quality Lloyd Loom furniture in Britain.

The collection is made using high quality twisted paper and wire weave, combined with steam-bent beech frames to produce iconic furniture that will last a generation.

With its reputation for comfort, strength and longevity, Lloyd Loom furniture graces many fine hotels and restaurants around the world. When you invest in our Lloyd Loom furniture, you are buying a classic Great British product that will stand the test of time.

Visit www.lloydloommanufacturing.com to find out more about the history of Lloyd Loom and the production of furniture in our factory.



ABBOT

A versatile contemporary dining chair, the crisp clean lines of the Abbot provide effortless sophistication to any setting. The Abbot chair is available with a standard padded weave seat or with a fabric seat.



ABBOT DINING CHAIR
TC002W
H101 x W460 x D550



ABBOT DINING CHAIR
TC002F
H101 x W480 x D570



ABBOT DINING CHAIR
TC003W
H101 x W570 x D570



ABBOT DINING CHAIR
TC003F
H101 x W570 x D570



ABBOT

The Abbot Collection with its modern, elegant design features square section tapered legs and a double weave back. The range also includes a series of functional stools.



ABBOT BARSTOOL
TS001W
H1070 x W430 x D540



ABBOT BARSTOOL
TS002W
H995 x W430 x D540



ABBOT HIGH STOOL
TS003W
H765 x W370 x D370



ABBOT LOW STOOL
TS005W
H470 x W370 x D370



ABBOT HIGH STOOL
TS004W
H690 x W370 x D370



BISTRO

A true classic – simple and versatile.

Bistro is one of our most popular ranges, ideal for relaxed dining.



BISTRO CHAIR
TC050
H890 x W430 x D570



BISTRO CHAIR
TC050F
H890 x W430 x D570



BISTRO CHAIR
TC051 - Double weave back
H890 x W430 x D570



BISTRO CHAIR
TC051F - Double weave back
H890 x W430 x D570





BANFORD

The whole Banford range is dedicated to relaxation, evoking the laid-back feel of the classic English club chair.

Deep and luxurious, the upholstered cushions provide unparalleled comfort with creative choices of fabrics and colours to really make the chair your own.



BANFORD ARMCHAIR
TA010
H780 x W830 x D840



BANFORD ARMCHAIR
TA010S
H780 x W830 x D840



BANFORD FOOTSTOOL
TS006
H480 x W620 x D480



BANFORD SOFA
TA011
H780 x W1550 x D840



BANFORD SOFA
TA011S
H780 x W1550 x D840



BANFORD

The collection includes an armchair, footstool, two seater and three seater sofas, available with standard fitted cushions or casual scatter back cushions.

Cushions can be made in any of our standard fabrics or your own choice of fabric. Accompanying tables are also available with or without a glass top.



BANFORD GRAND SOFA
TA012
H780 x W1950 x D840



BANFORD GRAND SOFA
TA012S
H780 x W1950 x D840



BANFORD COFFEE TABLE
TA013W – WEAVE TOP
TA013G – WEAVE & GLASS TOP
H460 x W540 x D1000



BANFORD SIDE TABLE
TA012W – WEAVE TOP
TA012G – WEAVE & GLASS TOP
H460 x W540 x D540



CRANFORD

Striking and elegant high backed dining chair

The Cranford chair is available with either a single or a double weave back. Choose from either a padded weave seat or an upholstered seat in any of our standard fabrics, or a fabric of your choice.



CRANFORD DINING CHAIR
TC030
H1020 x W440 x D590



CRANFORD DINING CHAIR
TC030F - Fabric seat
H1020 x W460 x D620



CRANFORD DINING CHAIR
TC031 - Double weave back
H1020 x W440 x D590



CRANFORD DINING CHAIR
TC031F - Double weave back
H1020 x W460 x D620



ELLWOOD

The Ellwood is a compact chair, very comfortable and suitable for both formal and informal dining.

With an upholstered fabric seat as standard, all models are available with either a single or a double weave back.



ELLWOOD DINING CHAIR
TC040F - Fabric seat
H940 x W470 x D610



ELLWOOD DINING CHAIR
TC041F - Double weave back
H940 x W470 x D610



FAIRBANK

The original Lloyd Loom armchair, equally at home in the 21st century recreating the elegance of the past.

The Fairbank is a design classic; functional and hardwearing, exuding grace and charm.



FAIRBANK WIDE ARMCHAIR
TA001
H900 x W710 x D630



FAIRBANK WIDE ARMCHAIR
TA001F
H900 x W710 x D630
UPHOLSTERED SEAT



FAIRBANK WIDE ARMCHAIR
TA001D
H820 x W710 x D630
UPHOLSTERED DROP IN CUSHION



FAIRBANK SLIM ARMCHAIR
TA002
H900 x W620 x D630



FAIRBANK

The Fairbank is available in many guises.

Both armchair and sofa come with a drop-in cushion seat, and the armchair is also available with a padded or flat weave seat. Cushions are available in any of our standard fabrics, or a fabric of your choice.



FAIRBANK SLIM ARMCHAIR
TA002F
H900 x W620 x D630
UPHOLSTERED SEAT



FAIRBANK SLIM ARMCHAIR
TA002D
H820 x W620 x D630
UPHOLSTERED DROP IN CUSHION



FAIRBANK WIDE ARM SOFA
TA004D
H820 x W1530 x D700
UPHOLSTERED DROP IN CUSHION



HADFIELD

The Hadfield collection is our largest range and offers a choice of practical and stylish chairs. All Hadfield models are available with either a weave or fabric seat with the option of a single or double weave back.

A feature of the Hadfield collection is the optional distinctive sloping skirt.



HADFIELD DINING CHAIR
TC010W
W440 x D580 x H980



HADFIELD DINING CHAIR
TC010F
W460 x D600 x H980



HADFIELD DINING CHAIR
TC011W - Double weave back
W440 x D580 x H980



HADFIELD DINING CHAIR
TC011F - Double weave back
W460 x D600 x H980



HADFIELD



HADFIELD DINING CHAIR
TC014F
 W480 x D560 x H990
 SLOPING SKIRT



HADFIELD DINING CHAIR
TC015W - Double weave back
 W480 x D560 x H990
 SLOPING SKIRT



HADFIELD DINING CHAIR
TC015F - Double weave back
 W480 x D560 x H990
 SLOPING SKIRT



HADFIELD CARVER CHAIR
TC016W
 W480 x D560 x H990
 SLOPING SKIRT



HADFIELD CARVER CHAIR
TC016D
 W480 x D560 x H990
 SLOPING SKIRT



HADFIELD DINING CHAIR
TC012W
 W440 x D580 x H980



HADFIELD DINING CHAIR
TC012F
 W440 x D580 x H980



HADFIELD DINING CHAIR
TC013F - Double weave back
 W440 x D580 x H980



HADFIELD DINING CHAIR
TC013F - Double weave back
 W440 x D580 x H980



HADFIELD DINING CHAIR
TC014W
 W480 x D560 x H990
 SLOPING SKIRT



TABLES

OUR TABLES ARE DESIGNED TO PERFECTLY COMPLEMENT
THE LLOYD LOOM CLASSICS COLLECTION.



LLOYD LOOM BISTRO

The Bistro table completes the set of our popular and versatile Bistro range, ideal for relaxed dining.

All of our Lloyd Loom Bistro tables are available with weave or weave and glass tops. Please specify W or G against the code. Brass clips are an optional extra with our glass tops, chrome clips are also available.



BISTRO SQUARE TABLE
TT011
H760 x W760 x D760



BISTRO ROUND TABLE
TT010
H760 x W760 x D760



BISTRO SQUARE TABLE
TT011G
H760 x W760 x D760
WEAVE & GLASS TOP



BISTRO ROUND TABLE
TT010G
H760 x W760 x D760
WEAVE & GLASS TOP



HANDMADE IN BRITAIN

WOODEN TOPS

You can select from the following woods for your table top:

BEECH | OAK | WALNUT

Oil finished as standard, however other finishes are available.
Our wooden table tops are fixed to a choice of solid hardwood legs.



HADDON

Our Haddon dining table with its neat design is constructed from solid hardwood and features fluted square legs. Select your base colour from our standard range or choose your own bespoke colour.



HADDON SQUARE DINING TABLE
DT001B – BEECH TOP
DT001O – OAK TOP
DT001W – WALNUT TOP
H760 x W900 x D900



HADDON RECTANGLE DINING TABLE
DT002B – BEECH TOP
DT002O – OAK TOP
DT002W – WALNUT TOP
H760 x W1500 x D900



HADDON RECTANGLE DINING TABLE
DT003B – BEECH TOP
DT003O – OAK TOP
DT003W – WALNUT TOP
H760 x W1800 x D900



HAMPTON

The Hampton dining table has an elegant design and turned legs and is constructed from solid hardwood. Feel free to select your base colour from our standard colour range or request a bespoke colour option.



HAMPTON SQUARE DINING TABLE
 DT010B – BEECH TOP
 DT010O – OAK TOP
 DT010W – WALNUT TOP
 H760 x W900 x D900



HAMPTON RECTANGLE DINING TABLE
 DT011B – BEECH TOP
 DT011O – OAK TOP
 DT011W – WALNUT TOP
 H760 x W1500 x D900



HAMPTON RECTANGLE DINING TABLE
 DT012B – BEECH TOP
 DT012O – OAK TOP
 DT012W – WALNUT TOP
 H760 x W1800 x D900



HOLKHAM

Holkham traditional turned table bases and solid wood tops are available with 960mm and 1200mm diameter. We are also happy to offer a variety of sizes including both round and non-standard square tops. Holkham is made with an oiled finish as standard. We can also produce a stained or lacquered finish.

Select your base colour from our standard range or select your own bespoke colour.



HOLKHAM ROUND DINING TABLE
DT020B – BEECH TOP
DT020O – OAK TOP
DT020W – WALNUT TOP
H760 x Ø960



HOLKHAM ROUND DINING TABLE
DT021B – BEECH TOP
DT021O – OAK TOP
DT021W – WALNUT TOP
H760 x Ø1200





SENNA
Clay



SENNA
Denim



SENNA
Granite



SENNA
Hopsack



SENNA
Lime



SENNA
Linen



SENNA
Plum



SENNA
Rose



SENNA
Stone



SENNA
Teal

BAND A FABRIC

Senna, a versatile plain woven fabric with a beautiful linen look finish. Its natural look makes this the perfect choice for modern interiors. The above fabrics are available as standard on our furniture. We also offer a complete COM service.

FABRICS

BAND B FABRIC

Portland, a brand new collection from which we have selected ten key shades. With our Lloyd Loom, this fabric will suit most interiors and give a stylish finish.



PORTLAND
Anthracite



PORTLAND
Boulder



PORTLAND
Chrome



PORTLAND
Granite



PORTLAND
Mauve



PORTLAND
Mink



PORTLAND
Mist



PORTLAND
Pebble



PORTLAND
Porcelain



PORTLAND
Wedgwood



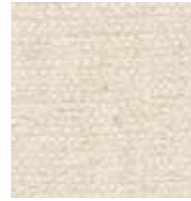
ARGYL
Charcoal



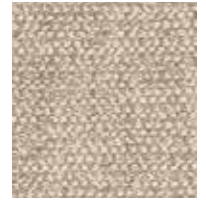
ARGYL
Denim



ARGYL
Duckegg



ARGYL
Raspberry



ARGYL
Taupe



KINBURN
Charcoal



KINBURN
Denim



KINBURN
Duckegg



KINBURN
Raspberry



KINBURN
Taupe



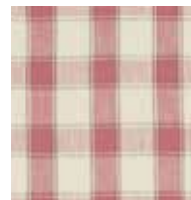
MONTROSE
Charcoal



MONTROSE
Denim



MONTROSE
Duckegg



MONTROSE
Raspberry



MONTROSE
Taupe

CLARKE & CLARKE

We strive to ensure the fabrics we use match the quality of our furniture. Our partnership with Clarke & Clarke ensures that our fabric selection offers excellent quality and choice, to perfectly complement our Lloyd Loom furniture.



The above fabrics are specially selected from the Clarke & Clarke Fairmont Range to complement our Banford Collection. With all our fabrics you can be sure that the fabric used on your furniture has been thoroughly tested.

Argyle is woven with space dyed yarns which create unique shading effects within the pattern, whilst Kinburn and Montrose have coordinating checks and stripes, woven on a very soft quality linen.



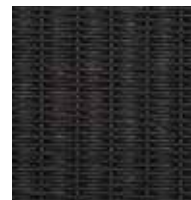
ARTICHOKE



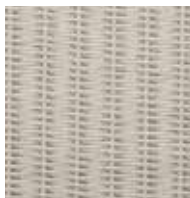
CARAMEL



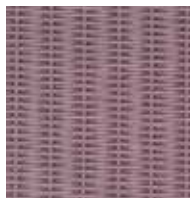
CHALK



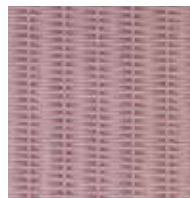
CHARCOAL



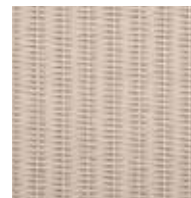
DOVE



HEATHER



JUNIPER



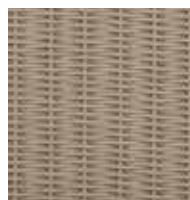
MUSHROOM



NATURAL



RAISIN



SLATE



TIDAL

WEAVE COLOURS

STANDARD COLOURS

Our indoor traditional weave Lloyd Loom furniture is available in any of our standard 12 colours – samples of these are available from your retailer or from the company. Select any of these colours at no additional charge.

At Lloyd Loom Manufacturing we spray all our Lloyd Loom furniture with a specifically formulated paint, designed to be durable with an attractive finish. Whilst we have selected a broad range of colours for our standard offering we understand that they will not be to everyone's taste – that is why we have teamed up with Little Greene Paint to provide you with an extended palette.

We can also supply any RAL or F&B colour at a surcharge. All colours are represented as accurately as the print process allows. Please contact us for swatches if an exact colour match is critical.



QUALITY AS STANDARD

Every piece of our Lloyd Loom Furniture is handmade to order by highly skilled craftsmen, making each piece unique. Although there are slight variations between each piece, we place strict controls and tolerances on the overall quality of our Lloyd Loom furniture.

To ensure a consistently high standard we use a 14 point Quality Inspection document that is attached to each item as it passes through production.

As each piece of Lloyd Loom furniture must pass up to one hundred different checks before it is stamped and cleared for delivery, we are confident that our Lloyd Loom products meet the highest quality as standard.

BRITISH QUALITY

10 YEAR GUARANTEE

We guarantee our furniture for 10 years, subject to normal use and conditions. For full details please see the terms of our guarantee in our price list or online.

Although every effort is made to ensure consistency of product it should be noted that, particularly in respect of handmade furniture, slight variations in both colour and specification can occur. The colour of new furniture will inevitably vary compared to furniture which has been produced some time ago. Fabrics may also vary from batch to batch. We therefore recommend that wherever possible customers purchase all of their furniture requirements at the same time if the best possible colour match is critical.

Every care is taken to ensure that illustrations/photographs in our brochures and on our website are as accurate as possible, but these should always be used as a guide only, particularly in relation to colour. Some images may have been digitally altered.

Although every care is taken to ensure that the information contained herein is correct and complete, no liability can be accepted in respect of the correctness or completeness of the information given. We reserve the right to amend the specification of our products at any time. All products are subject to availability.



HANDMADE IN BRITAIN

LLOYD LOOMTM

MANUFACTURING LTD.

Stumps Lane Business Park,
Stumps Lane, Spalding. Lincolnshire. PE12 6AT
United Kingdom

T: +44 (0)1775 767011
E: info@lloydloommanufacturing.com
www.lloydloommanufacturing.com



MADE IN BRITAIN 